

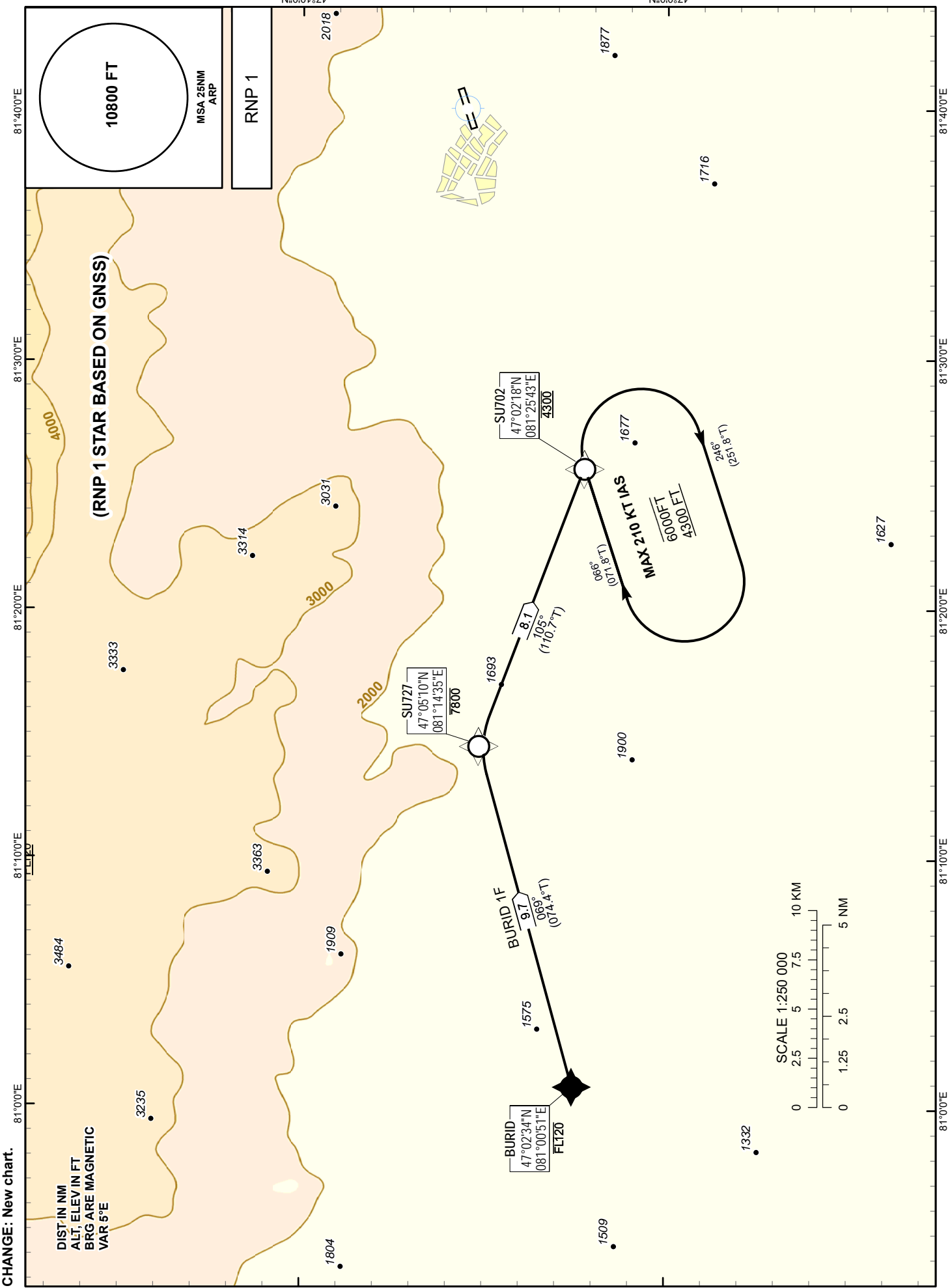
STANDARD ARRIVAL
CHART - INSTRUMENT
(STAR) - ICAO

TRANSITION ALTITUDE
10000 FT

URDZHAR TOWER 123.0

BURID 1F

URDZHAR
RWY 07



TABULAR DESCRIPTION

BURID1F RWY07											
Serial Number	Path Descriptor	Waypoint Identifier	Fly - over	Course M°(T°)	Magnetic Variation(°)	Distance (NM)	Turn Direction	Altitude (FT)	Speed (KT)	VPA (°)	Navigation Specification
010	IF	BURID	-	-	+5.4	-	-	-FL120	-	-	RNP 1
020	TF	SU727	-	069(074.4)	+5.4	9.7	-	-7800	-	-	RNP 1
030	TF	SU702	-	105(110.7)	+5.4	8.1	R	@4300	-	-	RNP 1
040	HM	SU702	-	066(071.8)	+5.4	5.0	R	+4300/-6000	-210	-	RNP 1

WAYPOINT COORDINATES

Waypoint Identifier	Coordinates	
BURID	470234.00N	0810051.00E
SU702	470217.52N	0812542.98E
SU727	470510.34N	0811434.59E